



MADE IN THE USA

"REVOLUTION" Headwall System



PALADIN HEALTHCARE®

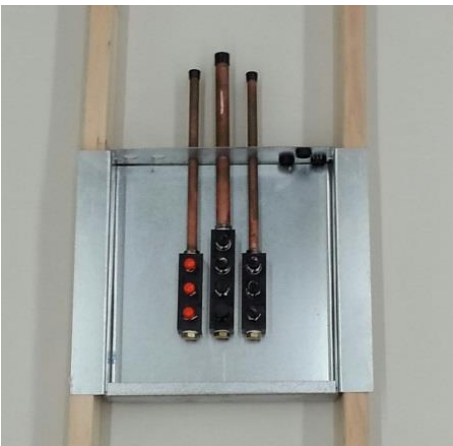
CHALLENGE:

How to create a clean, modern, user friendly environment with a cost effective and simple to install headwall product?



SOLUTION:

The Paladin "Revolution" headwall system is a state of the art integration of lighting, infection control, equipment management, and simple installation technology.



- Easy to install
- Single point connections
- Soft feed gas distribution to outlets
- Double layers of integrated "EVOLUTION" equipment rail



- Flexibility to modify clinical needs while preserving the value of the wall system
- Adaptability to cost effectively manage changing technology and user needs
- Expandability to quickly add essential services during surge and other unforeseen events
- Integrated with "Evolution" Fairfield-style equipment rail system. Equipment rail clears the floor of technology and rolling stands which improves patient access, reduces trip hazards, and improves floor cleaning access.
- Custom configuration of gas and electrical outlets
- Specify any manufacturer or type of outlet
- White with embedded anti-microbial finish, or a wide variety of RAL paint or wood grain finishes
- Supports hundreds of equipment management tools and accessories
- Non-invasive gas expansion with no system certification required

