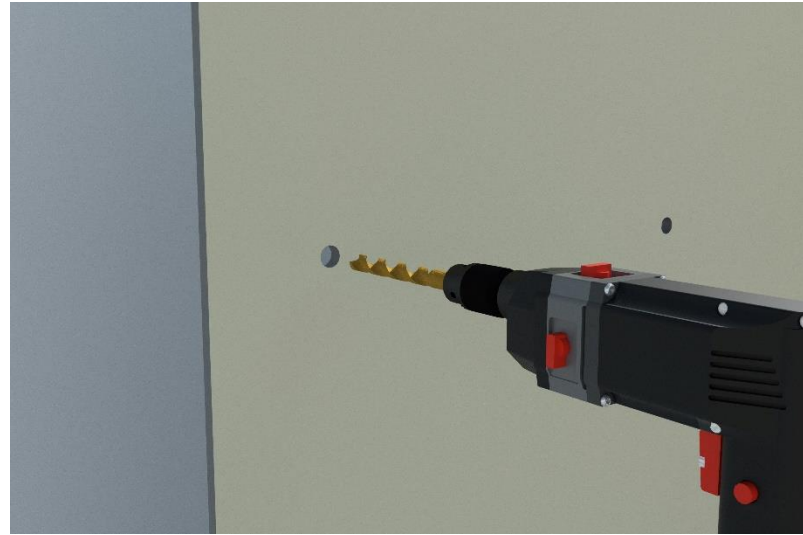
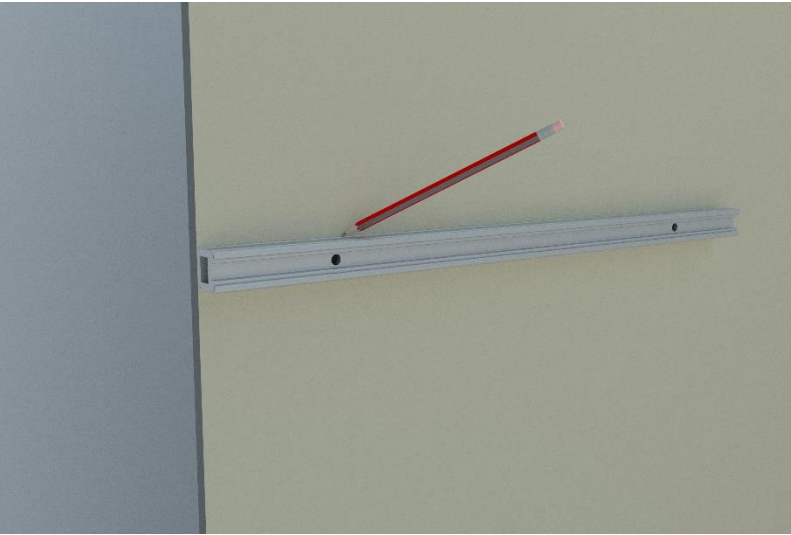




Rail Installation Instructions



PALADIN HEALTHCARE®



Step 1
Mark height
Level rail

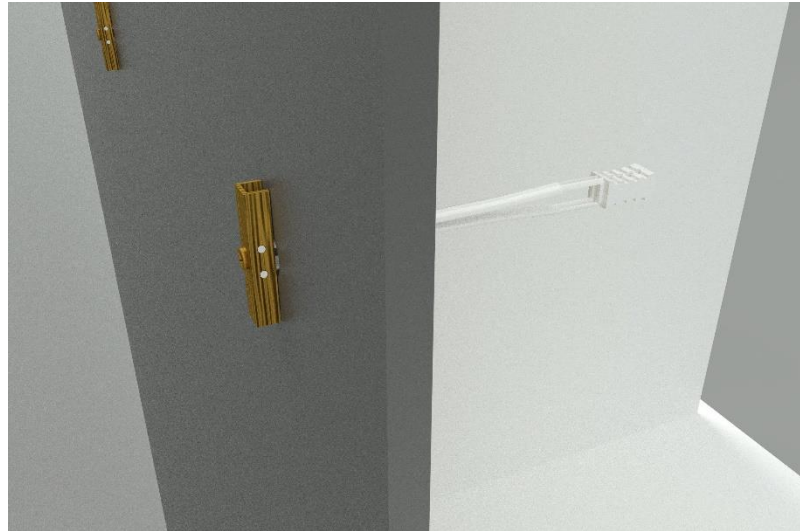
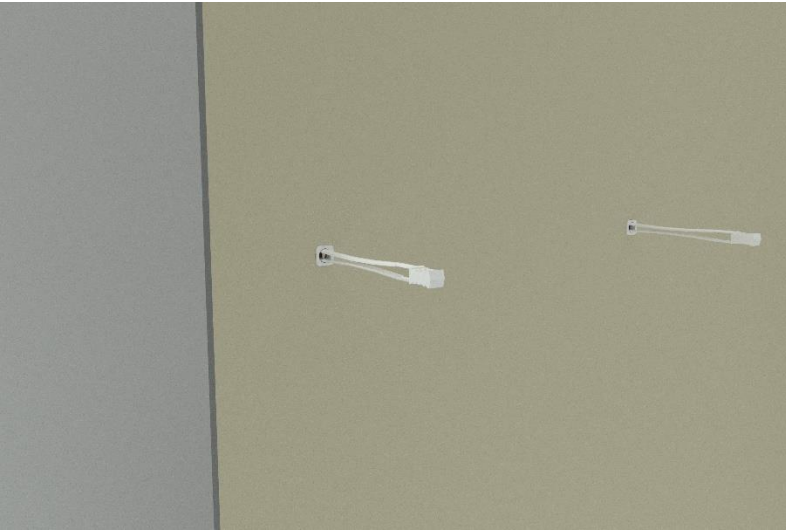
Step 2
Drill holes
Use drill bit size 1/2"



Step 3
Prepare 1/4" toggle type
wall anchors

Step 4
Insert 1/4" toggle type
anchors in locations as
marked



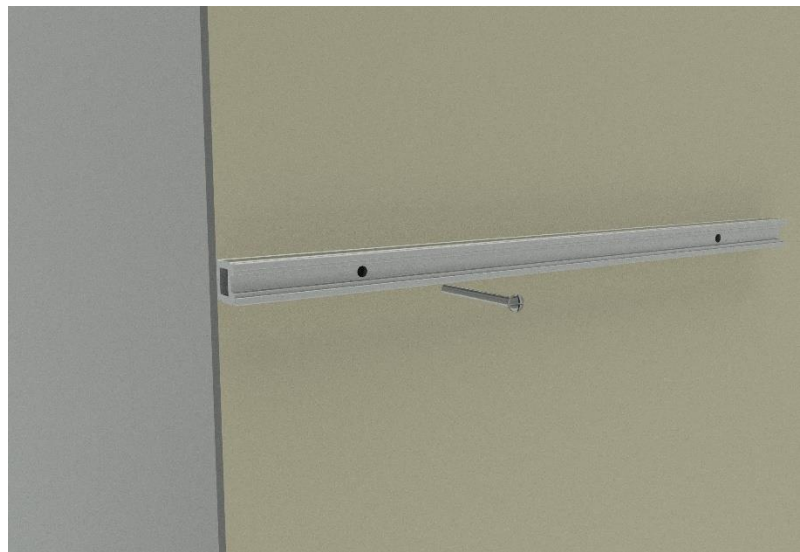
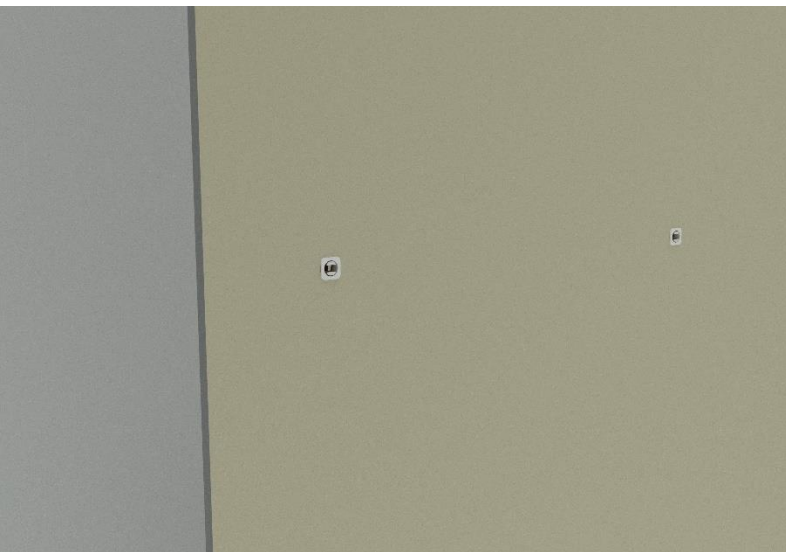


Step 5

Align and tighten to the wall (see step 6)

Step 6

Image for reference



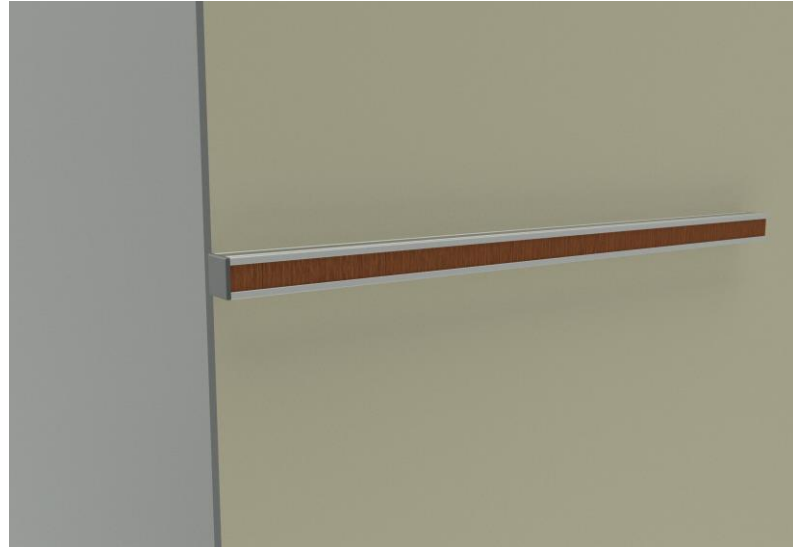
Step 7

Bend until plastic cracks, flush to the wall

Step 8

Re-align the rail.
Insert and tighten ¼" screws



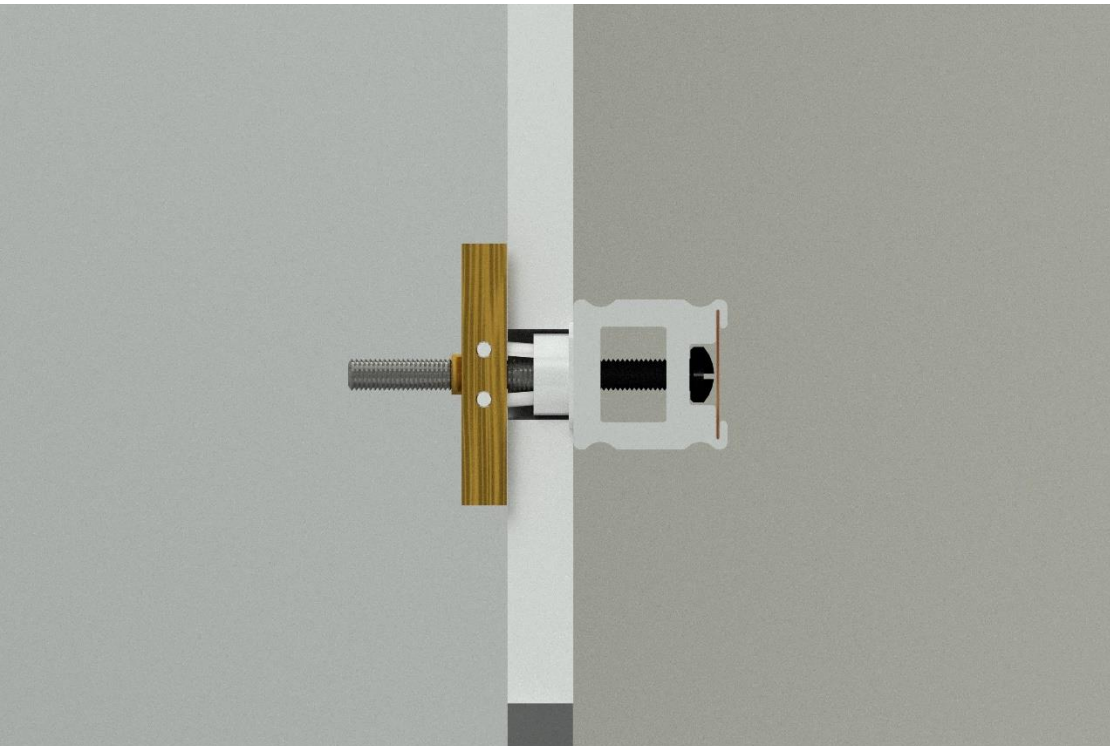


Step 9

Insert provided inlay strip and secure end caps on both sides

Step 10

Finished product



**CROSS
SECTION
OF THE
FINISHED
PRODUCT**

